



GOLDEN ANNIVERSARY

Treasure Island Scout Camp



BOY SCOUTS OF AMERICA, PHILADELPHIA COUNCIL

"AS BOY SCOUTS in the very early days of the movement (1911) our mecca each summer was Smithtown — a point midway between Pt. Pleasant on the Pennsylvania shore and the old covered bridge that crossed the Delaware to Frenchtown on the New Jersey side.



"Ours was a pioneer camp with no accommodations provided in advance . . . It was the popular 'Roses', our cook, who prepared and ladled out our food once each day. The other meals were our own responsibility as . . . training in campcraft.

"A favored hike led to the 'Devil's Teatable' . . . high above the river shore of New Jersey . . . an unusual panorama of the Island and river valley (photo top of page).



"It was from Jim and Sally Ridge's landing that 'old Jim' ferried us each year to WORMAN'S ISLAND in mid-river in his long flatboat.

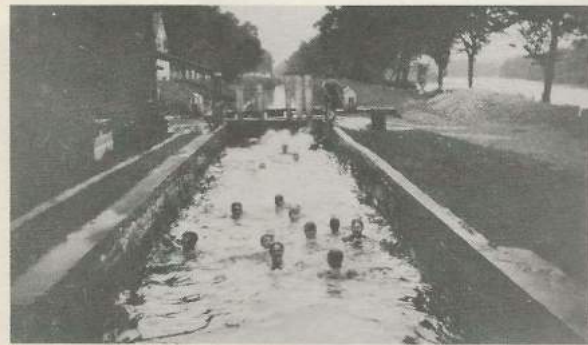
"Our Troop 46 Scoutmaster Oscar Worman's island was the same fifty-seven acres that had once been Edward Marshall's Island, whose father purchased it long before from the friendly Lenape Indians known as the Unami.

"A small patch of corn and a little buckwheat grew in a clearing — otherwise the island was heavily wooded just as the Indians had known it.



"On the Pennsylvania side of the Island there was swimming twice every day, in the river from a float of our own construction . . . in the swift-running canal with its low bridges to dive from.

"In January 1913 our primitive campsite came under a five-year lease to the Philadelphia Council, Boy Scouts of America to become the successor to Camp Pequea (on the Susquehanna River below



Columbia, Pa.). As 'TREASURE ISLAND' it blossomed into an organized summer camp. Thousands of boys have received training and enjoyment on the Island.

"We look back on our experiences there with fond recollections."

Memories of an early Camper
F. Pierce Sherry, San Rafael, California
former member Philadelphia Troop 46.

"IT IS GOING TO BE a true woodsman's camp. The real fun of camping out is to 'buck up' against the forces of nature and win out."

T. Truxtun Hare, Chairman of
T.I. Committee — 1913



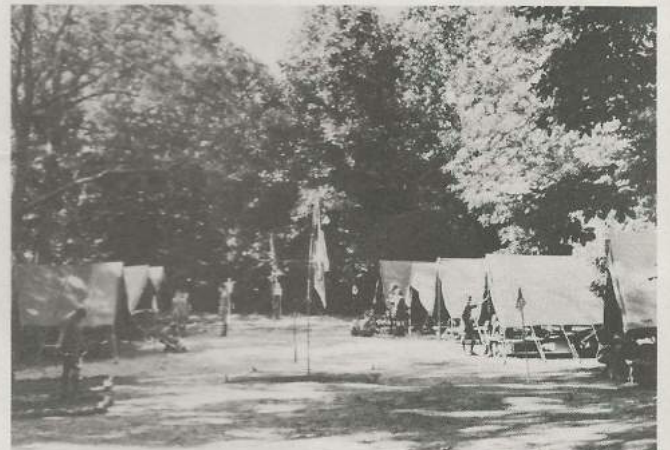
The first Nature Lodge. It was replaced by the present one in 1931.



On the nature trail with "Uncle Rufe" Davis.



Reforestation near the Nature Lodge — 1932.



A campsite clearing. Today we have eighteen sites for 250 campers.



"A group of boys and the woods become our laboratory of Scoutcraft knowledge".



Learning to survive in the woods.

THE ROUTES TO CAMP IN 1913

Route 1 — Trolley to Willow Grove, to Doylestown, to Randt's Mills. Hike east to Wormansville to Smithtown, turn north on River Road half mile to Treasure Island.

Route 2 — Steamboat on Delaware River to Trenton. Trolley to New Hope. Hike north on towpath of Lehigh Coal & Navigation Canal 13 miles to T.I.

Route 3 — Take PRR train Broad Street station to Byram. Hike north 3 miles.

Route 4 — Phila. to Willow Grove, to Doylestown via Hatboro or Doylestown Pike. Doylestown to Pt. Pleasant. 3 miles north via River Road to T.I.

Route 5 — Broad Street station over Belvidere Division to Kingwood, N.J. station, directly opposite T.I. Arrangements . . . to have camp boat meet trains.



The ferry from T.I. to New Jersey — 1927.



Arriving at camp today.



Medical Check-in and "repairs" — about 1913.



Carpentry Merit Badge — making their own oars in the 1920's.



The old dining hall — 1926. The present one was built in 1932.

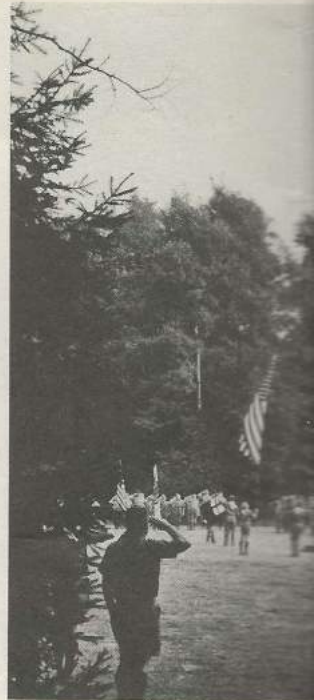


Building the Quartermaster Lodge — 1931.



Unami Lodge — 1924 — before the woods had grown.

"TREASURE ISLAND — can the imagination
that name? And it is truly all that the name



"From far down the line of tents comes the
by the boom of the bass drum, the squeal of
is coming. Ah, there's 30's boys and 32, and Him
Now they are forming a hollow square around
by to haul in while each Scout pays his silent



own oars in the 1920's.



one was built in 1932.

"TREASURE ISLAND — can the imagination of any boy withstand the magic of that name? And it is truly all that the name implies: a boy's happy hunting ground."

Louis M. Fleisher — "A Visit to T.I."
1914 Year Book of Phila. Troops



"From far down the line of tents comes the 'tat! tat!' — tat! tat! of the 'roll-off' followed by the boom of the bass drum, the squeal of fifes and the blare of bugles — troop three is coming. Ah, there's 30's boys and 32, and Hinkle's lads of 155, and 41, and all the others. Now they are forming a hollow square around the old flag, while the color guard stands by to haul in while each Scout pays his silent tribute to that glorious emblem of liberty."

Harvey A. Gordon
1918 Annual Council Year Book



Rolston Lodge — Dedicated July 13, 194
early Scoutmaster, staff member and

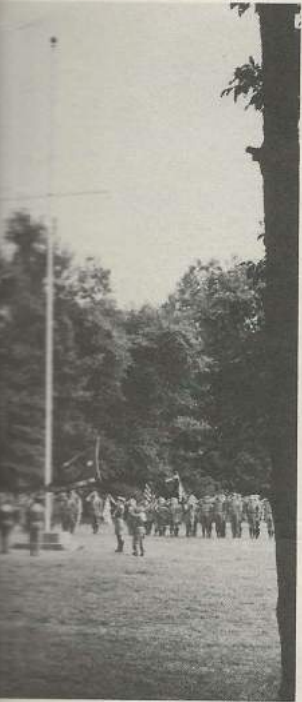


Canal Boat — 1926.
"One no longer hears the sonorous
a signal from a canal boatman to the
the barge of coal. The River Road is



tion of any boy withstand the magic of
e implies: a boy's happy hunting ground."

Louis M. Fleisher — "A Visit to T.I."
1914 Year Book of Phila. Troops



"tat! tat!" — tat! tat! of the 'roll-off' followed
files and the blare of bugles — troop three
inkle's lads of 155, and 41, and all the others.
and the old flag, while the color guard stands
tribute to that glorious emblem of liberty."

Harvey A. Gordon

1918 Annual Council Year Book



Rolston Lodge — Dedicated July 13, 1941 in honor of Horace W. "Shorty" Rolston,
early Scoutmaster, staff member and master teller of campfire tales.



Canal Boat — 1926.

"One no longer hears the sonorous shell horn echoing through the Valley as
a signal from a canal boatman to the locktender to prepare the lock to pass
the barge of coal. The River Road is now paved."

F. Pierce Sherry



Kiwanis Lodge built about 1928.



City Hall — 1926 — before the pines of Pine Road.

"THE SPIRIT OF THE CAMP — Over and above it all there broods the intangible something that man calls 'the spirit'. Whether it be the message of the woods, passed on from Indian aborigines or the lesson of the pioneer, who treasured the resources of the virgin land; whether it be the inculcation of the Scout principles in a practical living of the code on the island, or whatever it may be — it is bound to come. And it is, after all, that which leads to the noblest thing of all — an unselfish and upright manhood."



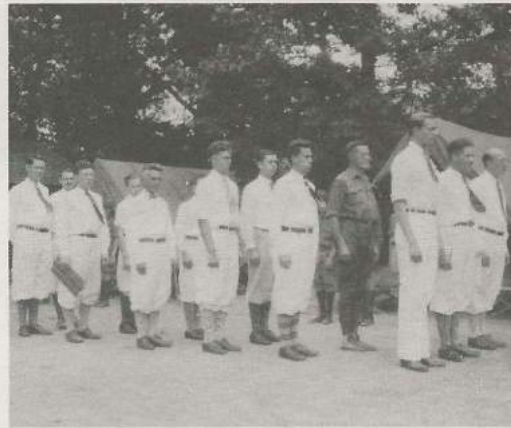
Chapel Service in the 1920's.



Man and Man-to-be.



Inspiration Point—The Treasure Island Poem.



"The Wearing of the Whites" — Sunday Staff inspection — 1926.

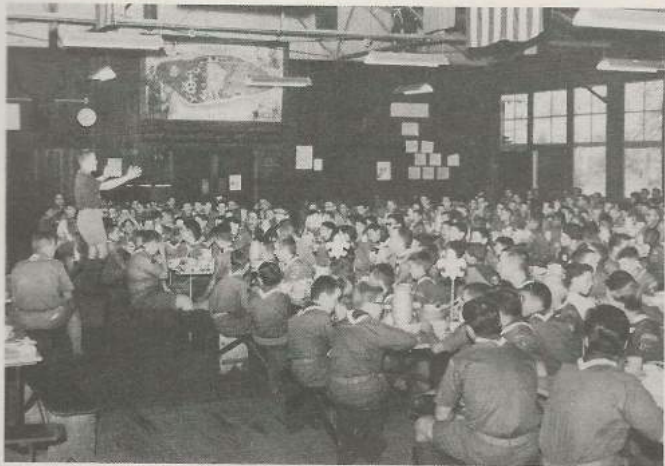


Campfire — Goodman Stockade.



"And then follow down to that hollowed amphitheatre in the woods — down there at the Southern end. If it were night time — and if it were the right night you might see, winding down from the central plateau, through the woodland paths to this hidden clearing, a long and solemn line of scouts — filing down in stately procession to the weekly ceremonial fire. You probably wish you might know all that goes on there as they gather — all on the island — in the still place."

E. Urner Goodman . . . 1916
Year Book of Phila. Council



"Here let the Treasure Island spirit kindle fires of friendship."



Learning to swim with paddle floats in the pool opened in '58. Low and contaminated water in the river made the pool a necessity.



The "interstate" Mitchell suspension foot bridge opened in '61 between the southern tip of Marshall Island (in Pa.) and the Northern end of Treasure Island (in N.J.).



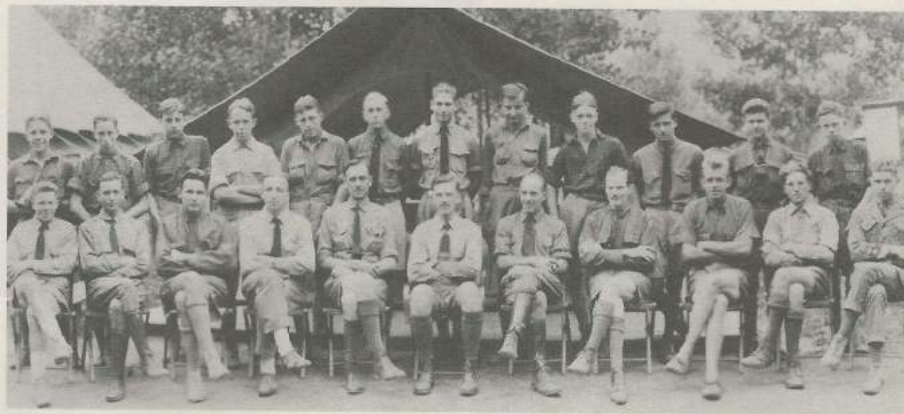
Boating in the North Channel. The T.I. fleet now numbers 30 canoes and 23 rowboats.



Former Scout Executive (1918-1927) & T.I. Camp Director (1915-17 & 19) E. Urner Goodman and Scout Executive (since 1951) H. M. "Mac" Privette at 45th Anniversary of the Unami Lodge, Order of the Arrow, October 21-23, 1960 at T.I.

A CHRONOLOGY TREASURE ISLAND SCOUT CAMP

- 1910-
- 1911 — Worman's Island — Scoutmaster Oscar Worman, Troop 46.
- 1913 — January — 5 year lease to Philadelphia Council, B.S.A. as Council summer camp. Dr. Charles D. Hart, Council Chairman was instrumental in selection of site.
- 1913 — First Summer camping season: 37 Troops & 351 Scouts attended. Camp fee \$3.50/week.
- 1914 — New dining hall (\$150.) to replace one blown down; Camp fee \$3.00/week.
- 1915 — E. Urner Goodman organizes "Wimachtendienk" (Order of the Arrow) to further Scout ideals in camp.
- 1916 — Friday night ceremonial fire becomes a tradition; Ferry to Jersey shore inaugurated.
- 1917 — "City Hall" replaces administrative tents; Camp "Newspaper" printed; 50 Troops 508 Boys — 10 days average stay; Scoutcraft school established.
- 1918 — Boy mayor and city bureau plan established to effect camp chores.
- 1918 — Mr. & Mrs. Edward Bok visit T.I. "Think of how many boys may continue to enjoy this camp year after year long into the future."
- 1919 — April 17 — Island purchased with the help of Edward Bok; capacity 300 per week.
- 1920 — Unami Lodge House erected.
- 1923 — Staff "Quad" shacks built.
- 1931 — Present Nature Lodge and Quartermaster shack opened.
- 1932 — Present Dining Hall constructed.
- 1934 — National recognition accorded Order of the Arrow.
- 1941 — July 13 — Rolston Lodge presentation ceremony.
- 1955 — August 19 — high water due to Hurricane Diane.
- 1958 — Marshall Island purchase added a 2½ mile island of adventures; T.I. pool opened.
- 1961 — Mitchell suspension foot bridge joined Marshall Island (in Pa.) and T.I. (in N.J.).
- 1962 — 50th Summer Camping Season.
- 1963 — T.I. Golden Anniversary Year — A solid foundation for future service and adventure for Philadelphia boys.



The Staff in 1920.

"... the spirit of the 1920 camp had been buried. As he locked the last building and took the boat across the river on homeward trip, he thought of his experience early in the spring. His mind wandered back in memory over the past season, over other seasons, when he saw the camp as a Staff Member, others when he saw it as a Scoutmaster with his boys, and as it did, it saw Treasure Island grow and mature from a deserted island with its poison ivy and wood ticks to an in-

stitution with its woodland trails, its improvements, its beach, its traditions, its organization, its songs, cheers, sports and activities.

Far greater than these are the thoughts of the pleasures of the thousands of Scouts who have camped upon its shores and who will camp upon them in the years to come.

Horace P. Kern, Director —
1921 Annual Council Year Book

TREASURE ISLAND CAMP DIRECTORS

J. W. PATTON 1913-1914
 E. URNER GOODMAN 1915-1917 & 1919
 HARVEY A. GORDON 1918
 HORACE P. KERN 1920
 BYRON J. PICKERING 1921-1922
 EARL PRITCHARD 1923
 A. C. NICHOLLS, JR. 1924-1928
 THOMAS G. CAIRNS 1929-1936 & 1942

GEORGE H. KELLER 1937-1941
 WALTER V. RUTHERFORD 1943-1944 & 1949-1950
 JOSEPH J. DAVIS 1945
 FREDERICK C. BACH 1946-1948
 GEORGE VERNOOY 1951
 LOUIS R. SPEALLER 1952-1953
 JOHN BOSCH 1954-1957
 CHARLES B. KAUFFMAN 1958-1963



**PHILADELPHIA COUNCIL
 BOY SCOUTS OF AMERICA
 22ND & WINTER STREETS, PHILADELPHIA 3, PA.**

ALBERT C. McCoy — Council President

LAIRD H. SIMONS, JR. Vice President, Camping
 GEORGE H. KELLER Camping Chairman
 HERBERT F. HERTZ Operations Chairman
 JOSEPH B. PARKS Properties Chairman
 FRANK B. JOHNSTON, M.D. ... Health & Safety Chairman
 WILLIAM R. DUFFELL Conservation Chairman

H. M. PRIVETTE Scout Executive
 CARL M. MARTINDELL Assistant Scout Executive
 CHARLES B. KAUFFMAN Director of Camping
 JAMES W. ARMOUR Assistant Director of Camping
 RUSSELL S. GERHAB Head Ranger
 LEROY VANSELOUS Ranger

T.I. 50TH ANNIVERSARY COMMITTEE

JOHN S. McQUADE, JR. — Chairman

LOUIS M. FLEISHER
 JOSEPH M. FLOUNDERS

LOUIS R. SPEALLER
 EDWARD S. WEYL

The publication of this booklet was made possible by the splendid and appreciated cooperation of Schuylkill-Hartung Paper Co., Joseph M. Flounders, President and C. E. Howe and Co., Inc. Melvin S. Feldenheimer, President.
 Cover art by George Rodenhausen

